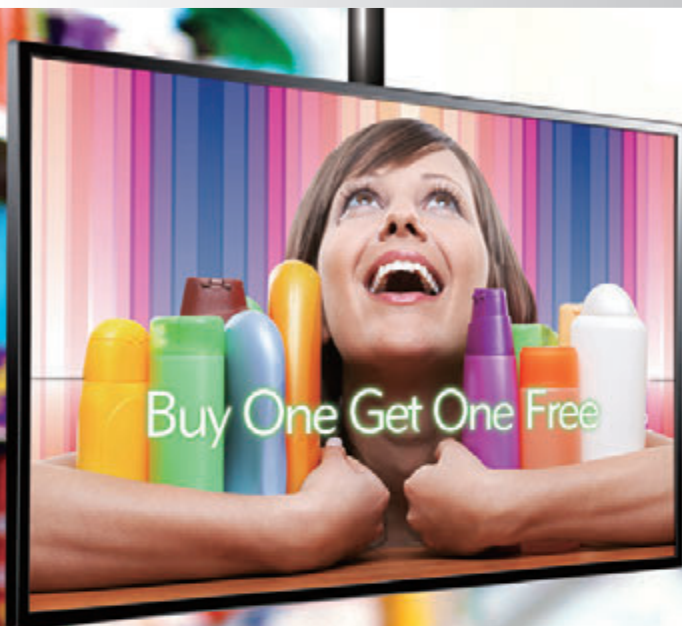


# Express

Spring 2013



[www.nexcom.com](http://www.nexcom.com)



## OPS Digital Signage Player Helps Accelerate Technology Rollout and Tap New Turf

### **In Depth**

About EIM E.S.C -  
Embedded Super Computing

### **Corporate News**

NEXCOM Allies with Partners to Establish Firm  
Foothold in Industrial Automation

### **Market Story**

Digital Signage Players Guide Supermarket  
Shoppers to Find the Best Prices



## Dear Partners,

Thank you all for the continuous support. We have accomplished 20% growth in Year 2012 compared with 2011! The business momentum came evenly from the established product lines like the NCS, ICS, MCS, and MMS. We expect the growth to be extended into Year 2013, since both the IT trend and world economy are getting stronger and stronger.

Our IDS BU, dedicated to the IP camera solutions, is delivering various form factors of cameras for customers' evaluation. We'll also offer the NVR solutions to support all the front end NEXCOM cameras as the best companions to speed up the customer decision making process, and offer a package deal to save evaluation time and total cost. The IP camera should be at the centre of many applications, such as traffic management, automation, retail, and all kinds of surveillance scenarios indoors or outdoors, day & night, etc. Soon you'll have many NEXCOM product packs including the IP Cameras.

Other exciting new product groups are the Machine Automation & Factory Automation (MA/FA) solutions. With NEXCOM's renowned NISE platforms deployed in many MA/FA applications, we know that our customers want NEXCOM to provide an integrated solution to resolve compatibility issues with products from other vendors. To make this happen, we have totally redesigned the NISE fanless industrial PC series to provide a dedicated range of platforms for Factory Automation called NIFE. We have also become a strategic partner of IntervalZero; a well-known provider of real time OS, the RTX, for Windows, and with Hilscher who offer communication interfaces. Many experts are highly interested in our range of MA/FA solutions.

Our SoC based platforms and solutions are also blossoming in the Spring season! The ARM based COM evaluation kits are available for customer's testing/porting for further design service. Besides the ARM based vehicle platforms and signage solutions, we now have full series of industrial/enterprise Wi-Fi solutions, not only with network management, but also network security, including the SoC based APs, routers, controllers, the management & security software, etc. The demand for communication infrastructure, particularly the wireless field, is growing significantly!

With so many new products to be introduced to the market, we'll attend many famous trade shows like the Hanover Messe, IFSEC, ISC West, etc. I sincerely hope all related partners could join us together for the maximum business momentum and for big future opportunities!

NEXCOM is well prepared for this Great Paradigm Shift. I think the Troika Mobile, Cloud, and IoT will drive the IT market to a new booming era which will then create huge demand on the so called Intelligent Systems the new term of Embedded Systems. This is our fertile field. Go go together to harvest from the Brave New IT World!

*Clement Lin*

A stylized, handwritten signature in black ink, consisting of a large 'C' followed by a series of loops and a long horizontal stroke.

# CONTENTS



## 02 Message from CEO

### In Depth

## 04 EIM E.S.C: Embedded Super Computing

### Corporate News

## 05 NEXCOM Allies with Partners to Establish Firm Foothold in Industrial Automation

## 06 NEXCOM Signs Greater China Region Distribution Agreement with IntervalZero for RTX Real-Time Software Technology

## 07 PLM: NEXCOM's Next Giant Step in Quality and Customer Satisfaction

## 08 NEXCOM Expands Its North America Office and Fulfillment Center

### What's New

## 09 Upcoming Worldwide Trade Shows

### Technology Focus

## 10 The Intelligent Systems Framework

### White Paper

## 12 OPS Digital Signage Player Helps Accelerate Technology Rollout and Tap New Turf

### Market Story

## 15 Digital Signage Players Guide Supermarket Shoppers to Find the Best Prices

## 16 Palm-size Digital Signage Player Inspires Future Generation of Elite

### What's Hot

## 17 Upcoming New Products that Take Your Breath Away

### Event Recap

## 27 Stand out the Eminent Feature in the Crowd at ISE

## NEXCOM EXPRESS

Spring 2013

### Publisher

NEXCOM

### Editors

Liyin Lin, Yihuan Ho, Joe Lai,  
Stephen Ritchie

### Designers

Jason Lee, Wayne Chen, Mickey Huang

### Web

[www.nexcom.com](http://www.nexcom.com)

### About NEXCOM

NEXCOM offers a world-class range of industrial fanless computers, factory automation, machine automation, industrial Wi-Fi, embedded computers, Panel PC, video analytic systems, IP Cameras, POS, digital signage media players, rugged tablet PCs, in-vehicle computers, and network security appliances.



# About EIM E.S.C - Embedded Super Computing



**Eytan Koren**  
General Manager

**W**ith nearly 3 decades of vast knowledge and experience, as part of EIM Group, EIM E.S.C. is specialized in all types of computing solutions, from custom made O.E.M / O.D.M to full HPC clusters and advanced Storage solutions.

We specialize in accompanying new entrepreneurs from concept to implementation of new product (NPI) moving to mass production (MP) and creating customer fulfillment centers. We consider NEXCOM our strongest partner and a true ally for this journey.

So what is the secret behind ESC-NEXCOM joint activities?

I guess it's a mixture of the Israeli market, which operates with the following advantages:

The number of Start-up companies in Israel is the highest in the world if calculated according to the population.

The per capita Venture Capital Funds channeled to Israel are 2.5 times higher than those invested in U.S and almost 30 times higher than those channeled to Europe.

The ratio of investment in research and development (R&D) to the gross national product stands at 4.8 percent - twice the OECD average. Not to mention the military R&D...

Combine these with a team of skilled professional technicians, creative project and account managers, supportive management and our Motto: Nothing is impossible, who dares wins, and you're on track...

Well OK... almost on track... to successfully accomplish our vision, goals and targets we needed a strong partner, and that's exactly where NEXCOM fits in.

With visionary leadership, the most devoted and capable sales managers, backed with innovative R&D engineers and professional logistics personnel, NEXCOM proves to be the perfect ally. The prompt support we receive throughout our daily operation, on special occasions and yes, sometime in crises, is what really makes a difference. There are many manufacturers in our market but only one NEXCOM, or as one of NEXCOM engineer, who spent last summer in Israel with our tech team better described: it's more than a partnership, it's a family!

I would like to end with a few words on Corporate Social Responsibility as I strongly believe it to be a key factor for a company's success:

We are part of EIM group which sees prime importance in being connected to the community in a long-term and binding relationship.

We set ourselves a target to integrate values of professionalism and altruism. In this framework, EIM group operates jointly with other groups, schools, police, manufacturer's union and local urbanites, a wide range of relationships that are related to the company's values. We are active members of the teaching committee of the labor union, and in this framework we are adopting high schools and their electronics departments. In addition we take a central part in electronics courses undertaken by teachers throughout the country and thus we want to qualify a future generation that is professional and skilled and will later perform according to modern industrial requirements.



For additional information, don't hesitate to contact me directly: [eytan@eimesc.com](mailto:eytan@eimesc.com)  
or just follow us on linkedin: [http://www.linkedin.com/company/eim-e-s-c---embedded-super-computing?trk=hb\\_tab\\_compy\\_id\\_2989596](http://www.linkedin.com/company/eim-e-s-c---embedded-super-computing?trk=hb_tab_compy_id_2989596)

# NEXCOM Allies with Partners to Establish Firm Foothold in Industrial Automation



Together with partners, NEXCOM has broadened the product offerings to help build a reliable infrastructure for an Ethernet-connected factory.

**N**EXCOM has partnered with Googol Tech, IntervalZero and Hilscher, aiming to gain greater traction in industrial automation market. Combining the partners' strengths, NEXCOM has broadened the product offerings to machine automation, factory automation and industrial Wi-Fi solutions. These moves enable NEXCOM to build a reliable infrastructure for an Ethernet-connected factory.

## Machine Automation Designed for Speed and Precision

Machine automation constantly evolves to carry out various control schemes and complex collaborative control. To accelerate the evolution, NEXCOM has built the NexMotion series, a motion control solution which consolidates NEXCOM's NISE industrial controller, Googol Tech's motion control cards and IntervalZero's hard real-time software RTX.

By leveraging the partners' strengths, the NexMotion series is a highly integrated solution which helps facilitate innovation and meets reliability, speed and precision

requirements for motion control, including distributed control, deterministic control, multi-axis multitasking control and multi-axis full closed-loop control.

## A Connected Factory Based on Ethernet Network

In a push for efficiency in factory operation and management, emerges an Ethernet-connected factory. To encourage such emergence, NEXCOM has allied with Hilscher to allow for free data flow between factory floor and factory central room. Combining Hilscher's communication modules, NEXCOM's NISE industrial controller can link up with field devices no matter the industrial protocols in use and therefore acquire raw data over the Ethernet network.

In essence, timely and remotely, field devices can be monitored and controlled while factory operators can perform predictive maintenance and real-time diagnostics based on the raw data derived from all over the factory.

## Flexible Wireless Network Meets Connection Need

A wireless network allows for easy and quick deployment and is a practical choice for network expansion. Facing the rising need for connectivity, NEXCOM Industrial Wi-Fi IWF series offers the industrial-leading wireless connection speed, extendable network coverage, traffic load balancing and layers of security protection. NEXCOM is working with Lionic to shore up the defense with comprehensive security solution. In short, the IWF series helps construct a quality, reliable, secure and easy-to-manage wireless network in addition to accelerating network expansion by its wireless nature. Also, boosting mobility is another advantage the IWF series offers.

# NEXCOM Signs Greater China Region Distribution Agreement with IntervalZero for RTX Real-Time Software Technology



**N**EXCOM has signed an agreement with software giant IntervalZero to serve as the official distributor for IntervalZero's RTX real-time software technology solutions in the Greater China Region on January 22nd. With a history of 20 years, IntervalZero is globally recognized as a provider of innovative real-time software solutions and has established a broad customer base in the industrial automation industry across Europe and United States. NEXCOM is integrating RTX real-time software technology into its renowned industrial fanless computers to tap into the automation industry quickly.

NEXCOM will play a key role in the distribution of RTX real-time software in the Greater China Region. General

Manager of Industrial Computing Solutions (ICS) Business Unit, Joe Lin, states, "From industrial fanless computers to customized integration services including consultation, integration and training, NEXCOM's one stop solution will speed automation equipment manufacturers' time-to-market in offering innovative automation designs to end users."

The combination of IntervalZero's real-time software solution and NEXCOM's fanless computers will provide great real-time control functions and ensures long-term system stability and reliability. In addition, the solution will be bundled with EtherCAT to enhance real-time control performance. Together, they offer device manufacturers a new generation of motion control technology that can

improve manufacturing productivity while reducing wiring and maintenance costs.

IntervalZero's CEO, Jeffrey Hibbard, said, "IntervalZero is honored to appoint NEXCOM as the major distributor for the Greater China Region. NEXCOM has professional experience and wide customer base in the industrial control industry, and possesses high degree of evaluation and market share. NEXCOM is renowned for its leading-edge industrial fanless computers and recognizes the value of our real-time software solutions, this partnership is a win-win strategy which will increase RTX products' market share in the Greater China Region, and help automation equipment manufactures to achieve a quick market entry and success."

# PLM: NEXCOM's Next Giant Step in Quality and Customer Satisfaction

To continue to fulfill our commitments to quality and customer satisfaction, NEXCOM is implementing product lifecycle management (PLM) in response to the rapid company growth and the increasing customers' needs for speed to market. With PLM in place, NEXCOM can satisfy the customers' expectations by assuring product quality, delivering innovative solutions quickly and overcoming shortening product lifecycle. This large scale project will be implemented within a short four-month period.

To assure product quality, important Voice of the Customer (VOC) data will be recorded and included into the PLM. Design changes which can happen at any stage in the product lifecycle will be identified, recorded, reported and managed to ensure customer requirements are met at all times. The high traceability of PLM enables every product to achieve the highest level of quality.

To increase speed to market, NEXCOM's PLM will incorporate a centralized platform to monitor, manage and execute the development of NEXCOM's expanding portfolio. This platform will

increase the collaboration of all the resources involved with product development, streamline development processes and effectively shorten development cycle. In return, NEXCOM can generate increased satisfaction for customers as they can leverage next-generation technology firsthand.

NEXCOM is set to complete the PLM system within a mere four months despite the fact that the implementation involves multifaceted process and tremendous cross-departmental teamwork. With a highly talented team, made up of from project managers to top level management, NEXCOM is fully mobilized to live up to its commitments to quality and customer satisfaction.

As NEXCOM provides more diverse and advanced technology solutions in the future, PLM will assist and streamline product management and business operations while fulfilling the company's quality mission: "Doing the right things right the first time, and everytime."



# NEXCOM Expands Its North America Office and Fulfillment Center

To satisfy the demands of its rapidly expanding customer base within the USA, Canada and Latin America, NEXCOM USA has recently expanded its office and fulfillment center capacity from 12,000 to 31,000 square feet. With ISO9001 certification, 21,000 ft<sup>2</sup> (68%) of the total capacity is dedicated to logistics, production and RMA service.

NEXCOM USA's production capacity for board level configuration can now reach 10,000 pcs per month while system assembly can reach 5,000 sets per month, increasing NEXCOM's production capacity by 250%. Peter Yang, NEXCOM USA President, says, "This increase in capacity will enable NEXCOM to accommodate its expected business growth to Year 2017." Except for four assembly lines, one refurbish/rework/ECO line and imagine loading station are added. Furthermore, the upgrade facilities with capability includes 600-square-foot proto

type/FAE testing lab, two burn-in chamber taking up 500 square feet, proto type mechanic shop, reliability testing stations, BGA rework station, labeling customization, and fully ESD control environment etc..

"Improvements to the center not only include increased floor space for hardware and facilities, but also an increased focus on solution providing to make customer success," says Peter Yang. The enlarged center aims to achieve six missions, including providing on-site first aid team ensuring the QA of products, targeting at aggressive RMA turnover days, working with customers in build-to-order customization, order fulfillment via global distribution, supporting upside storage, and enhancing customer relationship. Through these advancements, NEXCOM USA can deliver better and more efficient services to clients every time, all the time.



NEXCOM expands its North America office and fulfillment center in response to rapidly expanding customer base.



# Upcoming Worldwide Trade Shows

## Visit NEXCOM Booths to Learn Up-to-day Technologies



### Hannover Messe

Convention Center, Hannover, Germany  
 April 8-12, 2013  
[www.hannovermesse.de](http://www.hannovermesse.de)  
 Booth #: Hall 9 D09



### ISC West 2013

Sands Expo & Convention Center, Las Vegas, USA  
 April 10-12, 2013  
[www.iscwest.com](http://www.iscwest.com)  
 Booth #: 5139



### MIPS Moscow 2013

All-Russia Exhibition Centre (V.V.C.), Moscow, Russia  
 April 15-18, 2013  
[www.mips.ru/](http://www.mips.ru/)  
 Booth #: Pavilion 75A A341  
 (collaborate with Milestone System)



### NAFA

Atlantic City Convention Center, Atlantic City, USA  
 April 24-25, 2013  
[www.nafa.org/conference](http://www.nafa.org/conference)  
 Booth #: 507



### Secutech 2013

No.1, Jingmao 2<sup>nd</sup> Rd., Nangang District, Taipei City 11568, Taiwan  
 April 24-26, 2013  
[www.secutech.com](http://www.secutech.com)  
 Booth #: L837



### IFSEC 2013

NEC Birmingham, Birmingham, UK  
 May 13-16, 2013  
[www.ifsec.co.uk](http://www.ifsec.co.uk)  
 Booth #: 4/D30



### GovSec Conference and Exposition

Walter E. Washington Convention Center, Washington DC, USA  
 May 14-15, 2013  
[www.govsecinfo.com](http://www.govsecinfo.com)  
 Booth#: 2713



### WasteExpo

Ernest N. Morial Convention Center, New Orleans, USA  
 May 21-23, 2013  
[www.wasteexpo.com](http://www.wasteexpo.com)  
 Booth #: 2452



# The Intelligent Systems Framework

As devices are more and more connected, intelligent systems framework is under way. Under this framework, data acquired from all sort of devices can flow to backend systems where it can be monitored and translated into valuable information, allowing enterprises to make insightful decisions and therefore to increase competitiveness in the industries. As the data becomes the new currency, the standard of security must be higher further down the line. Dedicated to an intelligent future, NEXCOM offers a full range of products to help lay the groundwork for digital infrastructures in multiple vertical segments.

## Intelligent Retail

### NDiS Digital Signage Player

Designed for message delivery, NEXCOM digital signage player NDiS series not only is capable of eye-catching content

playback. This series also supports anonymous video analysis and interactive technologies to determine viewer demographics, understand viewers'



interest and thereby help enterprises optimize the content strategy. The NDiS series offers various connecting options, enabling remote content update and player status check. To accelerate the digital signage rollout, models following open pluggable specification are available for ease of installation and maintenance.

### NexPOS Point of Service

Designed for customer experiences, NEXCOM POS terminal NexPOS series provides more than transaction processing. The NexPOS can integrate with kitchen display system, backend warehouse system or in-store surveillance system, effectively informing associate staff with incoming orders, keeping inventory status up-to-date, supplementing sales records with video proof and therefore helping retailers satisfy ever-demanding customers in the fast-paced retail industries.



## Intelligent City

### VTC In-Vehicle Computer

Designed for vehicle telematics, NEXCOM in-vehicle computer VTC series can gather, display and transmit data over the internet to help track vehicle locations, optimize route planning, enhance situational awareness, monitor vehicle subsystems and improve driver behavior. This series can also serve the purposes of in-vehicle surveillance and infotainment, increasing productivity and safety within both on-road and off-road vehicles and bringing joy to passengers.



### NISE Fanless Computer

In intelligent transportation systems, NEXCOM fanless computer NISE series can measure traffic volume and vehicle speed, detect red light runner, recognize license plate and control traffic signals. By providing road traffic status in real time and video footage, the NISE series assists with road traffic monitoring and traffic regulation enforcement with the aim to relieve traffic congestion and improve road safety.



## Intelligent Factory

### NISE Fanless Computer



In factories, NEXCOM fanless computer NISE series can be used as an industrial controller that gathers status information of manufacturing equipment on the factory floor in real time and sends this information to the SCADA system in the central control room. The status information can be seen as a proof of operation, be used to identify early indicators of potential problem and be analyzed to find the root cause of an existing condition. The real-time diagnostics and predictive maintenance can save time, cost and manual efforts required for factory management and increase equipment uptime.

### IWF Industrial Wi-Fi Family



Designed for industrial network, NEXCOM Industrial Wi-Fi IWF series offers an "always-on" "always-connected" wireless network. The IWF series enables data to flow smoothly at the industrial-leading connecting speed, prevents data drop even when a connected device is on the move, encrypts data and guards against unauthorized network access. The IWF series can therefore help set up a quality,

reliable, secure yet easy-to-manage wireless network whilst maximizing mobility for industrial applications.

## Backend Systems

### Network Security Appliance

Designed for a secure network, NEXCOM network security appliances are developed to establish secure communication tunnels, block unauthorized traffic and respond to malicious activities, spam and malware, ramping up network defense in line with overwhelming network traffic for large enterprise, SME, telecom carrier, and industrial network with the NSA, DNA, TCP and ISA series respectively.



### Leveraging NEXCOM Strengths for Intelligence Systems

- **Data acquisition:** Various I/O interfaces are integrated to control a wide range of field devices including cameras, sensors and measurement tools to capture data ranging from environmental readings to video images.
- **Connectivity:** Wired/ wireless connection, expandable LAN density, high connection bandwidth, and connection redundancy are supported to establish a reliable and fast communication network either over intranet or internet.
- **Manageability:** Hardware platform can be monitored, controlled and managed through status check, remote KVM and data and system recovery.
- **Security:** data authentication, encryption, compression and access control are supported to shore up network defense.

# OPS Digital Signage Player Helps Accelerate Technology Rollout and Tap New Turf

The beauty of digital signage is the ability to deliver right message to the right audience. To realize this ambitious goal, digital signage needs new technologies and needs it fast. To answer this need, NEXCOM has developed a digital signage player, the NDiS M532, which follows the Open Pluggable Specification (OPS), supports 3rd generation Intel® Core™ processors, and integrates Intel® Active Management Technology (Intel® AMT).

In this white paper, we explain how OPS accelerates technology roll-out and simplifies digital signage deployment; how the powerful mixture of 3D graphics, HD media processing, and computing performance of the 3rd generation Intel® Core™ processors answers technology needs; and how Intel® AMT technology facilitates post-implementation operation and maintenance of digital signage. We also show how the M532 OPS digital signage player based on the latest Intel® platform technology providing all these capabilities can benefit a wide range of applications.

## Standardized OPS Module Facilitates System Deployment

Frequently, the best displays are not bundled with the best digital signage players. This can keep a digital signage system from taking advantage of the best technology. There can also be hardware interoperability issues. The Open Pluggable Specification was created to help solve both these issues.

The OPS approach is to standardize the electrical and mechanical specifications for displays and players. It allows system integrators (SIs) to pair an OPS-compliant panel with an OPS-compliant player from different vendors without worrying the issue of incompatibility. If occasion arises for player upgrade, SIs can always choose another OPS-compliant player from the market that best meets application requirements and budget constraints.



Mounting standalone players onto the back of displays is common on suspended digital signage systems. However, installing and maintaining can be arduous. Mounting the player, hanging the display, connecting and fixing the cables all take time and effort. Future system maintenance and upgrade can demand twice the commitment since the player cannot be dismantled and replaced before the display is taken down.

By contrast, deployment is made easy with OPS. An OPS-compliant player coming with one 80-pin JAE connector is essentially a pluggable module that can be slotted into and powered by an OPS display. The modular design eliminates the need of display and

power cables and saves a great deal of the effort that goes into installation and maintenance. And system malfunctions resulting from loose connections can also be prevented.

By removing hardware incompatibility and streamlining system deployment, OPS can spur greater use of pluggable players. Projection imaging systems in museum, videoconferencing AV systems in auditorium, smart whiteboards in classroom and large display walls in stadium are new turfs a pluggable player can set its foot in.

## Graphics Lies at the Core

The pursuit of stunning and vivid display of images and videos calls for high performance digital signage players. Vying for viewers' attention, digital signage content is increasingly embracing the animation and special effects extensively used in video games. Add to that the relentless pursuit of high definition playback, and it's easy to see how a player is put to a stringent test and requires an outstanding graphics engine.

Based on the 22nm technology, the graphics engine integrated in the 3rd generation Intel® Core™ processors compete well with mainstream graphics cards. The Intel® HD Graphics 4000 includes a new 3D graphics engine, Intel® Quick Sync Video technology, and support for DirectX 11. It is so powerful that it can handle sophisticated graphics processing and video decoding without relying on discrete hardware accelerators or computing cores.



The modular design eliminates the need of display and power cables and saves a great deal of the effort that goes into installation and maintenance.

Used in the digital signage player M532, the Intel® HD Graphics 4000 can yield substantial benefits in terms of reduced hardware cost, smaller form factor, and lower power consumption since a discrete graphics card is no longer required. In addition, the graphics performance improvement means a more efficient computing resources allocation, leaving computing cores to perform tasks such as anonymous viewer analysis (AVA), a computing-intensive application.

In the retailer industry, AVA has generated genuine interests for its ability to enable a digital signage system to deliver right message to right audience. By means of computer vision and video analysis techniques, a digital signage system is capable of displaying customized contents based on the result of audience measurement to increase the impact of marketing communication.

Supporting several processors in the 3rd generation Intel® Core™ processor family, the M532 can accommodate different levels of computing power requirements in assorted application scenarios while smoothly displaying immersive stunning visuals through its Intel® HD Graphics 4000.

## Intel® Active Management Technology for Easy Management

Most remote management tools are only capable of software-level monitoring and control. As a result, they can leave digital signage players down for a long time if the root cause of system failure lies in the hardware, firmware and operating system and requires a technician onsite. Intel® AMT provides a better solution through out-of-band access, hardware status check and remote Keyboard-Video-Mouse (KVM) control, and other features. These can reduce system downtime, minimize on-site visits, and improve hardware management.



Intel® AMT allows IT to remotely remediate and recover systems after OS failures

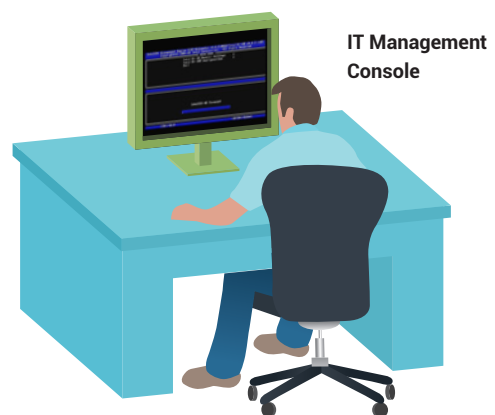
Out-of-band access gives technicians more control over a digital signage player, making remote recovery possible even after OS crashes. If a player is down because of hardware failure, a hardware status check allows technicians to pinpoint a defective component from afar and have it replaced in one field trip.

Better still, the hardware status check gives technicians an opportunity to prevent a dysfunction fiasco. They can use it to detect potential hardware failures and respond before the failures happen. What's more, the remote KVM control enables technicians to see what is displayed on the local monitor. This can enable them to perform remote maintenance. It can also be used to provide proof of play on advertisements and other content.

As long as a player is powered and connected, managing a worldwide digital signage network or a network deployed in countries with high labor cost, can be both more cost-effective and time-saving. As network connectivity varies from place to place, the M532 with its support for WWAN, WLAN and LAN connections is nothing if not adaptive and ready to connect.

## Conclusion

OPS, 3rd generation Intel® Core™ processors and Intel® AMT all address different problems. However, the combination of these three elements in an OPS-compliant player like the M532 enables digital signage systems to enhance marketing impact by quickly delivering higher quality graphics and greater computing power, enabling SIs to tap new markets and customers through easier deployment. A standardized and pluggable player with Intel® AMT also helps reduce system downtime to a minimum by simplifying onsite maintenance and enabling remote diagnosis.



This white paper is published in Intel® Embedded Community <http://embedded.communities.intel.com/docs/DOC-7545>

# Digital Signage Players Guide Supermarket Shopper to Find the Best Prices

**N**EXCOM's digital signage player NDiS 163 is widely deployed across hundreds of supermarket chains in Belgium with the goal of guiding customers around the stores to find the right product at the cheapest possible price. Serving as an in-store signage and communication platform, NDiS 163 created a shopping environment that stimulates customer purchases while facilitating information sharing between the central office and supermarkets.

NDiS 163 offered supermarkets the ability to update pricing dynamically and fulfill the company's mission of delivering the best prices in the market. When new and better prices are identified from the central office, in-store prices are updated and displayed in real-time to ensure customers are well informed about the latest deals, increasing potential purchases.



NEXCOM digital signage player  
NDiS 163 is used to stimulate customer purchases and facilitate information sharing between the central office and supermarkets.



Inside the stores, NDiS 163 enabled supermarkets to create a pleasant shopping environment by informing shoppers about food tasting events, recipes, product details and advertisements using vivid images and videos. Simultaneously, NDiS 163 streamlined the communication between the central office and supermarkets, allowing administrators at the central office to send information on product recommendations relevant to the weather conditions of each store location for a tailored shopping experience.

In-store shoppers also found the digital signage players useful in guiding them around the store to locate the right product, making the shopping experience fast and convenient.

NDiS 163 brought many benefits, not only it improved the customers' shopping experience, increased business revenue, and streamlined communication, it also provided cost savings by replacing traditional print posters in the stores.

The NDiS 163 player incorporates an industrial fanless design, Gigabit Ethernet and Intel® HD Graphics with HDMI output to provide reliable operation, fast network connection for remote content management and smooth Full HD video playback, all of which are the key success factors for this project. Since the start of the project, Microtron, NEXCOM's system integrator partner, helped designed and deployed a total solution involving thousands of NDiS 163 without any defect. Satisfied with the great results, the supermarket operator is planning to install another hundreds of NDiS 163 for its subsidiary brands over the course of 2013.

# Palm-size Digital Signage Player Inspires Future Generation of Elite

**N**EXCOM digital signage player NDiS 125 is used to inspire the future generation of elite with legacy of great minds. A Turkish university has installed hundreds of NDiS 125-based digital lecterns to help lecturers pass down knowledge and expertise to students whilst simplifying classroom management.

Designed for teaching, the digital lectern is integrated with NEXCOM digital signage player NDiS 125 and a 22-inch touch monitor. With the lectern, a lecturer can pool substantial teaching resources stored in personal laptops, USB flash drives or network storage space and put them on a large projection screen to give students a clear view. Better still, a lecturer can make annotations to the presentation during the class and save the changes for the future use, a feature literally merging smartboard into the lectern.

The lectern is also used in classroom management, including equipment management and keeping attendance records. Outfitted with a RFID reader, the lectern is intended to read RFID-enabled ID cards issued to both lecturers and students. By tapping the ID card, a lecturer can power up and get access to the system and control

microphone, speaker, projector and projection screen because the original AV system in the classroom is connected to the lectern as well. As to students, the lectern can register student's attendance and send attendance data to a central database where all records are kept.

In this project, NEXCOM digital signage player NDiS 125 was introduced into the digital lectern by NEXCOM's system integration partner. Based on the NDiS 125, the lectern has established itself as a competent digital teaching assistant, helping lecturers deliver dynamic lectures, manage classroom equipments and keep attendance records. Nevertheless, the lectern exhibits a sense of minimalism. Because of the palm-size NDiS 125, the lectern has a slim and sleek look and is beautifully integrated into the classroom.

Moreover, the NDiS 125-based lectern provides the groundwork for distance education. As the university plans to reach out beyond classroom, the lectern can incorporate a webcam to provide online broadcasting of lectures, streaming both lecturer's image and presentations in the future.





# Upcoming New Products that Take Your Breath Away

## NISE 4000

### High Performance x86-based Platform Aimed at Industrial Automation Application

Being more than just a platform, the NISE 4000 has built-in optical isolated digital inputs and digital outputs commonly used in industrial fields. Along with 4 expansion slots, the NISE 4000 is an ideal solution to those who need multiple add-on cards in one single controller. Two mini-PCIe sockets provide further connectivity, such as 3G, Wi-Fi and industrial fieldbus. Multi-function windows are reserved for mini-PCIe slots. With all connectors on the front panel, the NISE 4000 facilitates wiring and maintenance in the front access design.

NISE 4000 supports up to Intel® 3rd generation Intel® Core™ i7 processor. The computing power is sufficient for most on-line inspection applications. Two USB 3.0 ports and four GbE LAN ports are provided for high-speed devices such as IP camera, USB storage, USB download system and IP-based intelligent devices. The built-in RAID 0/1 function satisfies the HDD requirement for performance and redundancy. Unlike other design, the NISE 4000 provides three independent displays directly via widely-used VGA and DVI connectors.

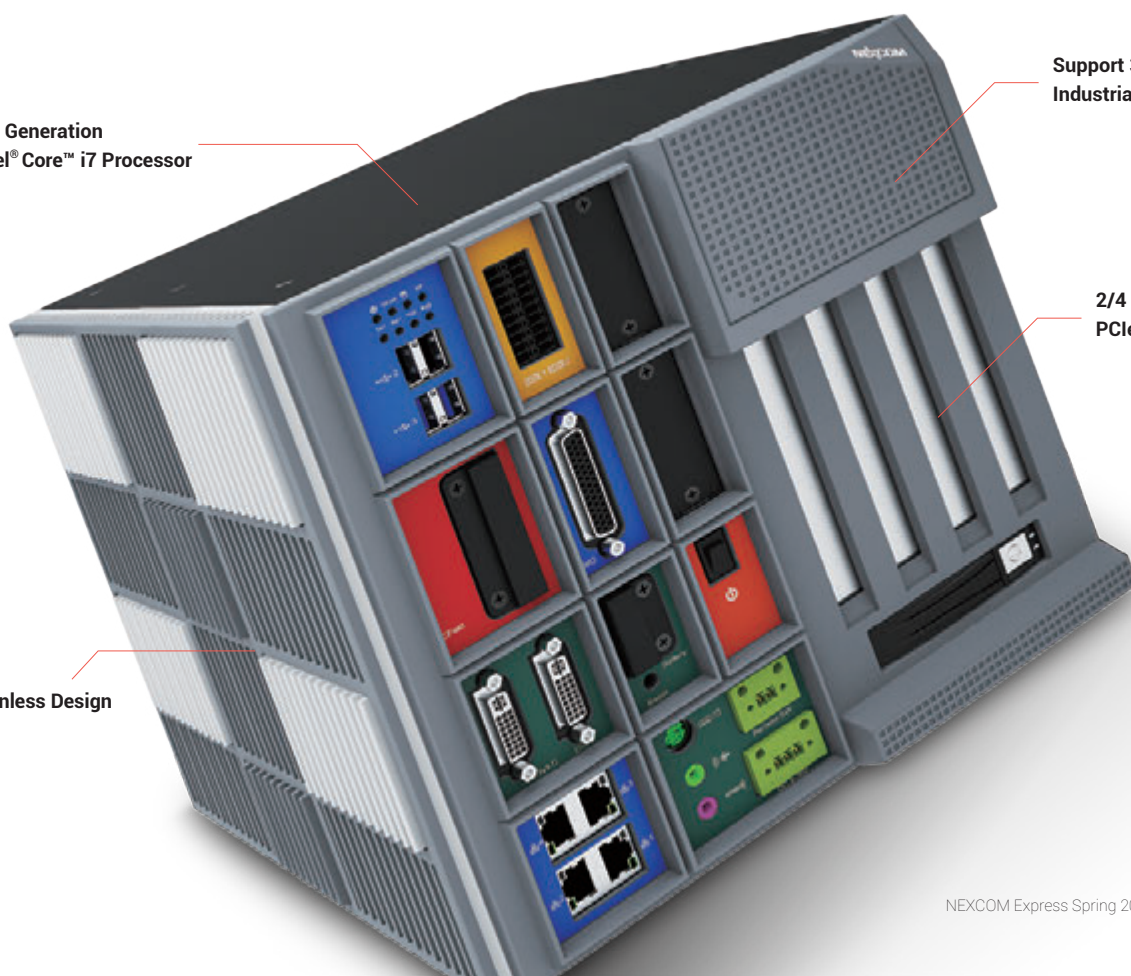
Besides meeting all industrial automation requirements, the NISE 4000 also features the fantastic industrial design. Grouped layout and vivid coloring deliver robustness with friendliness. With the modern outlook, unparalleled performance and rich expandability, the NISE 4000 has created a new page for industrial controller.

3rd Generation  
Intel® Core™ i7 Processor

Support 3G, Wi-Fi,  
Industrial Fieldbus

2/4 Slots of PCI or  
PCIe Express Slot

Fanless Design



## NISE 2200/2300

### Power Effective Fanless NISE for PC-based Controller

To accommodate growing popularity of Ethernet and serial protocols among field devices, NEXCOM has developed two power-effective fanless NISE systems to fulfill different demands. The NISE 2200 is powered by dual-core Intel® Atom™ processor D2550 and supports DVI and HDMI display outputs, 6x USB, 6x COM (4x RS232/422/485 & 2x RS232) and 2x LAN ports. The NISE 2300 also features dual-core Intel® Atom™ processor D2550 and supports DVI-I and DVI display outputs, 6x USB, 4x COM (4x RS232/422/485) and 4x LAN ports. Both NISE 2200 and 2300 support Win7, XP, WES2009, Win CE7 and WES7. The NISE 2200/2300 supports wide input voltage from 9VDC to 36VDC and wide operating temperature from -20 to 65 degree Celsius. The NISE 2200/2300 is ideal for use in self-service kiosk, check-in machine, machinery automation, industrial automation and sophisticated machinery, for which a PC-based controller is necessary.

Model	NISE 2200	NISE 2300
CPU	On-board dual-core Intel® Atom™ D2550 processor at 1.86 GHz	
DVI	1x DVI-I	1x DVI-I/ 1x DVI-D
HDMI	1	0
USB2.0	6	
RS232/422/485	2	
RS232/422/485 Isolation	2 (with 2KV isolation protection)	
RS232	2	0
GPIO	4-in/4-out (external)	
CFast socket	1	
mini-PCIe	1 (internal)	
SIM card holder	1	1
Power input range	ATX, Support +9V to 36VDC	



NISE 2200



NISE 2300

## NISE 3640E

### High Performance NISE for AOI Inspection, ePolice and IP-based Automation



NISE 3640E

Not letting NISE 2200/2300 monopolize the limelight, high-performance fanless NISE embedded computer range has invited the NISE 3640E to join its ranks. The high-performance NISE 3640E has integrated 3rd generation Intel® Core™ i7 processor paired with QM77 PCH. It has 2x USB 3.0, 2x USB 2.0, SATA 3.0, 3 independent displays, various COM ports (2x RS232/422/485, 4x RS232), 4x LAN and greater expansion capability. The NISE 3640E supports 24V DC input, ATX power mode, WoL and LAN teaming. NISE 3640E supports Win7, XP, WES2009 and WES7. With computing and graphic performance enhancement, the NISE 3640E satisfies needs for graphic-intensive and computing-oriented application, including auto optical inspection, industrial automation, ePolice, surveillance, image processing equipment and healthcare imaging.

- On-board 3rd generation Intel® Core™ i7 BGA processor; QM77 PCH
- Support 1x 2.5" SATA HDD or 2x SATA DOM; 2x Display Port; 1x VGA; 1x DVI-D; 2x USB3.0; 2x USB2.0
- 4x Intel® 82574IT GbE LAN ports; Support WoL, teaming and PXE; 2x DB9 for RS232/422/485; 1x DB44 Serial Port for 4x RS232
- 1x internal mini-PCIe socket supports optional Wi-Fi or 3.5G module; 1x CFast socket; 1xSIM card socket
- Support 24V DC input; support ATX Power mode; 1x PCIe x4 expansion slot



## IWF 2220

### Dual-band Dual-RF Managed Access Point for Light Industries

To extend the service coverage of NEXCOM industrial WLAN infrastructure solution, NEXCOM has launched the IWF 2220 targeted at light duty industrial application. The IWF 2220 can work in conjunction with industrial and outdoor access points, all of which can be centrally managed by a backend WLAN controller. The IWF 2220 is designed to provide Wi-Fi services in light industrial environments including assembly line, warehouse and staff office.

The IWF 2220 supports tunnel-based AP management and complies with all standards required for enterprise applications, including business-grade security (802.1X, WPA and WPA2) and multiple ESSIDs with VLAN tags to separate the traffic coming from different departments. Embedded with 802.11n/a + 802.11n/b/g concurrent dual-band 2x2 MIMO radios in its metal housing, the high speed (up to 300Mbps per radio) IWF 2220 is designed for wireless connectivity services. The well designed 20dbm high RF power, LNA (Low Noise Amplifier) and high gain antenna provides 4 times the coverage of ordinary APs. The dual power input of PoE 802.3af & DC 12V ensure continuous power supply all the time.

- Dual concurrent IEEE 802.11a/n + 802.11b/g/n for transmission rate up to 2 \* 300 Mbps
- Excellent coverage by 20dbm high RF power
- Dual power input supporting 802.3at PoE and DC 12V Input
- Multiple Virtual AP for grouping policy management
- Layer-2 Wireless Firewall protection

## SWF 1210

### Security-embedded Access Point Designed for SMB

Today most of BYOD (Bring your own devices) or embedded devices lack correct or most efficient network security protection. In response to this issue, NEXCOM has launched the SWF 1210 security access point which integrates DPI (Deep Packet Inspection) scan engine to protect conventional PC-based equipment and non-PC embedded devices from network security threats.

The SWF 1210 secure access point is designed for small and medium businesses that lack the necessary resources and skillful MIS management skills. The SWF 1210 features high performance dual RF and dual band and integrates 5 DPI-based security software modules to provide high throughput communication in a secure WLAN environment. The 5 security modules include:

- Anti-virus (AV): packet base virus scanning, including HTTP/FTP/SMTP/POP3/IMAP4 Protocols
- Intrusion Prevention (IPS): packet-based intrusion scanning with 2,600+ rules signatures
- Application guard: packet-based protocol classifier, including IM and P2P blocking
- Web guard: website hijacking prevention with concise URL malicious website Database (560K+ rule database)
- Web filtering: user behavior control by logic base classify web into 35 major categories

All these signatures and rules are supported by a backend signature database that makes sure you get the up-to-date protection. User gets one-year free access to signature database upon purchasing and can renew the license to get permanent internet protection.

## NEX Series

### From Mini-ITX to ATX, NEXCOM Industrial Motherboards Come in Various Form Factors

NEXCOM has released a full series of industrial motherboards to empower industrial computer applications. Based on the 3rd generation Intel® Core™ processors, the new additions to NEXCOM industrial motherboards include Mini-ITX NEX 609, Micro-ATX NEX 883 and Standard ATX NEX 980. Supporting industrial PCI/PCIe expansions, industrial power supplies and product longevity, this series can lay the digital infrastructure for industrial automation, medical imaging, security surveillance and telecommunication.

### NEX 609

The Mini-ITX NEX 609 features the socket-type 3rd generation Intel® Core™ processors and is paired with mobile Intel® HM76 Express Chipset. NEX 609 can process surging volume of data and multimedia contents generated from industrial automation and medical imaging. Supporting a wide selection of display outputs and the latest USB 3.0 and PCIe 3.0 as well as PCI interfaces, NEX 609 presents adequate flexibility and expandability. In addition, the one onboard Mini PCIe is designed to meet the needs for storage and wireless communication while enhancing vibration resistance and reliability of the NEX 609. As an industrial motherboard, it can automatically adapt to 12/24 VDC power supply.



NEX 609

### NEX 883

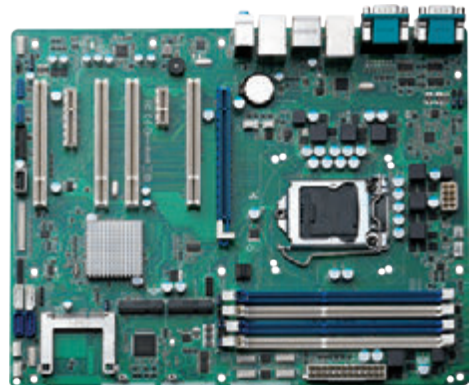
The Micro-ATX NEX 883 support socket LGA1155 3rd generation Intel® Core™ processors paired with Intel® Q77 Express Chipset. To provide higher level of expandability, this industrial motherboard offers a blend of mainly PCIe 3.0, legacy PCI as well as HDMI/ DP/ DVI-I interfaces for dual displays. Yet it is compact in size and is therefore ideal for use in wallmount enclosures, control cabinets, gateway controller and modular control console.



NEX 883

### NEX 980

The Standard ATX NEX 980 features socket LGA1155 3rd generation Intel® Core™ processors paired with Intel® Q77 Express Chipset. The NEX 980 supports PCIe and PCI expansions, Ethernet connection, peripheral interfaces of USB 3.0 and SATA 3.0 and displays outputs including HDMI, DisplayPort and VGA. Combining numerous functionalities on its standard ATX form factor, the NEX 980 is suited for rackmount systems used in industrial automation and telecommunication applications.



NEX 980

	NEX 609	NEX 883	NEX 980
Form Factor	Mini-ITX 170 x 170mm	Micro-ATX 244 x 244mm	Standard ATX 305 x 244 mm
Processor	3rd generation Intel® Core™ processors Socket rPGA988	Desktop 3rd generation Intel® Core™ processors Socket LGA 1155	
Chipset	Mobile Intel® HM76 Express Chipset	Intel® Q77 Express Chipset	
PCIex16	1	1	1
PCIex4	1	1	1
PCIex1	2 (Gold Fingers on the Edge)	0	1
PCI (v2.3)	By optional riser via PCIex1	2	4
mini-PCIe	Wi-Fi, 3G or mSATA	1	1
mSATA	Auto-detect by mini-PCIe	1	1
CFast	0	0	1

## PBOX 520A

### New PBOX with Industrial Motherboards

The PBOX 520A features a 4U 19" Rackmount ruggedized PC chassis and is built with industrial ATX motherboard based on LGA1155 3rd generation Intel® Core™ i7/ i5/ i3 processors with longevity and revision control support, satisfying enterprise applications including computer room, server farm and datacenter. With high-density of PCIe and PCI expansion slots, the PBOX 520A is suited for industrial automation, testing and measurement, industrial control monitoring, process control. NEXCOM customized service provides custom front-bezel and chassis color for high volume and large projects.

- 19" rackmount industrial chassis for ATX/ micro-ATX industrial Motherboards
- Shockproof disk bay design hold up three 5.25" and one x 3.5" device bays.
- Adjustable height of Hold-down clamp design for add-in cards protected shock and vibration
- Power and HDD LEDs indicate system availability
- Front accessible air-filter for dust and easy maintenance
- Key-Lockable front door to avoid unauthorized access
- Thermal design with dual cooling fans in front and extra dual cooling fans in the rear windows
- Standard ATX 400W, active PFC F3, full-range 100~ 240VAC input

#### PBOX 520A meets CE/ FCC class B certifications:

- CPU Core™ i7-3770 (Intel® 3rd generation Core™ i7/3.4Ghz/max. 77Watt)
- System DDR3 memory 32GB
- DVD player (1st front device bay 5.25")
- HDD (3.5" 500GB/2nd front device bay 5.25")
- PIO/SIO/VGA/Audio/USB 2.0/USB3.0/LAN/HDMI/DisplayPort
- Mini-SATA, CFAST and full system loading of all I/O ports tested
- ATX 400W, active PFC F3, full-range 100~ 240VAC



PBOX 520A front view

## NPB 3550

### POS Box with High Flexibility and Scalability

The NPB 3550 is a high value rugged die-cast aluminum POS box PC that is designed with high flexibility and scalability. The rich I/O interfaces make the POS system easily work with various peripherals. It is perfect for the retail, kiosk, and restaurant industries. Unique sleek and noise free fanless design driven by a dual-core Intel® Atom™ D2550 processor makes it a cost effective and high value terminal.



NPB 3550

Additional features like easy-open latch design for tool-free access and removable HDD for cold swapping make repair so easy, lowering terminal downtime to almost zero thus saving on maintenance cost. Hardware platform can be easily upgraded by swapping out mother board but not swapping out I/O board.

- Intel® Atom™ D2550 Dual-Core processor and NM10 PCH
- Easy to open the top cover.
- Removable motherboard
- 2 x removable hard drives
- 1 x DVI-D & 1x VGA display output
- 1 x Realtek GbE LAN port; 6 x USB; 1 x Intel® GbE LAN port

#### ATX 400W, Active PFC F3, 100V~240V AC full range input



#### ATX, LGA1155, industrial MB up to 7x slots

PBOX 520A rear view

## NCm-301-V, NCI-301-V, NCo-301-VHR, NCr-301-VHR

### Revolutionary Features Enrich User Experience with IP Cams

NEXCOM is going to launch a full line of innovative IP cameras in 2013. The new IP cameras include NCm-301-V, NCI-301-V, NCo-301-VHR and NCr-301-VHR and offer the following unique features to upgrade user experiences to a new level.



#### 60 fps

Support high-performance H.264/MJPEG compression technology and offer extra smooth video at up to 60 fps in 1080p and 30fps at 3 megapixels.



#### Video Stabilization

The technology offers image stabilization, which detects vertical/horizontal movements and utilizes sophisticated algorithms to counter unwanted movements.



#### Smart IR

The technology automatically adjusts IR output in response to the distance of the object in view. The closer the object is, the dimmer the IR will be. With this technology, users will avoid the object over-exposure commonly seen in camera using traditional IR function.



#### P-Iris

P-iris control works with software to automatically provide the best iris position for best exposure time in different lighting conditions. The result is a clearer image with better contrast and depth of field.



#### True WDR (Wide Dynamic Range/100db)

The feature overcomes challenges in various lighting conditions by capturing both the dark and bright part of an image, combining the differences into one frame to generate a highly realistic image.

## NMm 004/008/104

### Advanced Mobile NVR Designed for In-vehicle Surveillance

NEXCOM is going to launch a full line of NexNVR surveillance hardware systems in 2013. The NMm Mobile NVR series is designed for in-vehicle surveillance. Equipped with SIM card and mini-PCIe sockets, the system supports 3G network for instant data transfer, Wi-Fi upload and two-way voice communication. In addition, the series has eight built-in PoE interfaces, which meet IEEE802.3af-16.8W per port.

Consolidated with NEXCOM IP cameras, the NexNVR offers better image quality. The easy plug-and-play deployment allows users to get started quickly. Along with the integrated IP cams and hardware system, NEXCOM provides a complete VMS solution, which offers users live view, playback, and system configuration on VMS with quick access anytime and anywhere.

#### Advanced Functions

- Embedded Linux system
- Full HD local display output
- 4/8 channels IP camera recording/ playback
- 4/8 ports PoE switch included
- Plug & play automatic installation & configuration
- IP camera dual streaming support
- Megapixel video recording
- Per channel configuration
- 4/8 channels audio recording
- iOS and Android phones supported

NMr 004/008/016



## NMr 004/008/016

### Compact and Cost Effective Tower NVC for SMB

The NexNVR surveillance hardware system also includes the NMr Tower NVR series, which is designed for small and medium business and retail shops. The NMr series is compact in size and provides a wide variety of display I/O configuration. This Tower NVR series supports up to 16 channels of megapixel IP cameras, dual streaming in H.264 and M-JPGE formats for live view and up to 12TB storage capacity.

Consolidated with NEXCOM IP cameras, the NexNVR offers better image quality. The easy plug-and-play deployment allows users to get started quickly. Along with the integrated IP cams and hardware system, NEXCOM provides a complete VMS solution, which offers users live view, playback, and system configuration on VMS with quick access anytime and anywhere.

#### Advanced Functions

- Embedded Linux system
- Full HD local display output
- 4/8/16 channels IP camera recording/ playback
- Plug & play automatic installation & configuration
- IP camera dual streaming support
- Megapixel video recording
- Per channel configuration
- 4/8/16 channels audio recording
- iOS and Android phones supported



NMm 004/008/104

## VTC 100

### Compact Low Power Consumption Telematics Computer

The VTC 100 is a telematics computer which is especially designed for in-vehicle applications used in extreme environments where operating temperature is dynamic and power supply is limited. The VTC 100 is powered by ultra-low power consumption ARM® Cortex™-A8 processor. VTC 100 integrates smart vehicle power management features that make it ideal for in-vehicle operation. The built-in CAN receiver provides option to support SAE J1939 or J1708 protocols. VTC 100 integrated various wireless communications including Bluetooth, Wi-Fi, 3.5G, and GPS receiver. The VTC 100 is an open system with support for Windows® Embedded Compact 7 and Linux operating system, enabling flexible application software development. The VTC 100 is a good choice for harsh telematics applications.

- ARM® Cortex™-A8 processor with 720MHz frequency
- Built-in GPS receiver
- Built-in CAN Bus V2.0b; optional support for J1939/J1708
- Support PAN/ WLAN/ WWAN Options
- Wide operating temperature -20°C~70°C
- Wide range DC power input (9~36V)
- Ignition trigger power on/off control
- Smart vehicle power management
- Operating system support WEC7 and Linux



VTC 100

## VTC 7120

### In-Vehicle Computer with Flexible I/O Options

The VTC 7120 is added to the new generation of VTC 7 series and is powered by Intel® Celeron® 847E 1.1 GHz processor. Key features of the VTC 7120 include smart vehicle power management, built-in GPS, regulated DC power output, wake on RTC/ SMS, and choice of variant I/O features, including PoE LAN ports, SAE J1939 or J1708 CAN ports, RS232/485, and GPIO. VTC 7120 is designed with very flexible architecture allowing quick customization to meet arbitrary application requirement. The integrated Intel® HD graphic controller makes VTC 7120 an ideal platform for intelligent video application in a mobile environment.

- Support WWAN with dual SIM slots
- Built-in GPS receiver
- Support BT/ WLAN
- Optional CAN bus in support of SAE J1939 or J1708
- Wake on RTC/ SMS
- Wide range DC power input (9~36V)
- Ignition trigger power on/off control
- Smart vehicle power management
- Regulated DC output



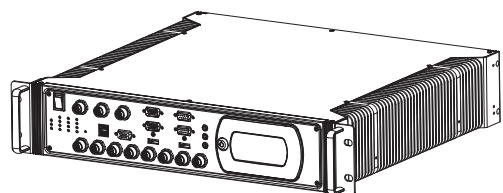
VTC 7120

## nROK 5500 Series

### Reliable Mobile Server for Rolling Stock Application

The nROK 5500, a 2U rack mount computer with fanless design and EN50155 certified power supply, is designed for train applications. It supports up to 8 channels of PoE with the lockable M12 connector and up to four removable/lockable 2.5" SSD trays. The manufacture option of 24V or 110V power supply allows nROK 5500 easier adapt to different train system. The nROK 5500 is designed with robust and reliable mechanical system which is resistant to shock and vibration and meets extended working temperature. The flexible architecture scales nROK 5500 performance from cost effective Intel® Atom™ to latest Intel® Core™ processor. nROK 5500 is the perfect product for passenger infotainment system and mobile surveillance in train.

- 19" 2U rack mount form factor with fanless design
- 24V or 110V DC power input
- Scalable performance from Intel® Atom™ to Intel® Core™ processor
- Flexible I/O options
- Optional 8-channel PoE with M12 connectors
- Built-in GPS receiver
- Support WWAN with dual SIM slots
- Support BT/ WLAN
- Removable 2.5" SSD/ HDD with secure key lock design
- Certified by EN50155



nROK 5500 Series



## VMC 3000 Series

### Robust 10.4" All-in-One Vehicle Mount Computer

The VMC 3000 series is an all-in-one computer integrated with high quality high brightness LCD, intuitive touch and easy access function keys. VMC 3000 comes with an handful LED indicator to keep user aware of system healthy status The VMC 3000 features with smart vehicle power management, handful function supporting ignition trigger and time delay power on/off control, low voltage protection and wide voltage input range. It also supports CAN bus with optional SAEJ1939 or 1708 protocol. Designed with IP65-compliant enclosure, VMC 3000 can work flawlessly in dirty and humid environments. With MIL-STD-810F compliant anti-vibration and anti-shock design, VMC 3000 can work on the bumping road without losing its functionality. It is ideal to use in heavy duty truck, construction truck, forestry truck, agricultural machine, and crane truck.

- 10.4" XGA TFT LCD with ultra-high brightness
- Resistive touch
- 10x function key
- Automatic/ manual brightness control
- Support WWAN with dual SIM slots
- Built-in GPS receiver
- Support BT/ WLAN
- IP65 protection
- Wide range DC power input (9~36V)
- Ignition trigger power on/off control
- Smart vehicle power management



VMC 3000 Series



VMD 3002

## VMD 3002

### Rugged In-Vehicle LCD Monitor with Projective Capacity Touch

The VMD 3002, a 10.4-inch vehicle display, integrates ultra-high brightness LCD panel and projective capacity touch to support dual point touch. With high performance loud speaker, ultra-high brightness LCD display, and the IP54 enclosure, the VMD 3002 address the need for in-vehicle application that is not satisfied by consumer-grade monitors. VMD 3002 support VGA or DVI interface for computer display output and two NTSC/PAL analog video input ports for rear view camera. The VMD 3002 consolidates the power, touch, audio, and display interface signal in one cable harness to facilitate the installation and wiring. VMD 3002 is an ideal display monitor for versatile in-vehicle applications.

- 10.4" XGA TFT LCD with ultra-high brightness
- Projective capacity multi-touch
- Automatic/ manual brightness control
- Multiple video input support
- Built-in high performance loud speaker
- Easy cabling and maintenance
- IP54 protection
- Wide range DC power input (9~36V)
- Ignition controlled power on/off
- Smart vehicle power management

## NDiS 165

### Digital Signage Player Tiling Full HD Video

NDiS 165 is a powerful digital signage player which is built around the superb technology of AMD embedded R-Series APU family. The digital signage player can offer impressive system performance and full HD 1080P video playback on three displays. This 1080P signage player can fully satisfy customer's expectation and therefore be used in applications such as advertising, hospitality, brand promotion and digital menu board.

- AMD R-series APU with integrated Raden HD7000 GPU3x HDMI output with tiled video support
- USB 3.0 and dual GbE LAN support
- Removable fan module
- WWAN/ WLAN/ TV tuner support



NDiS B532

## NDiS B862

### Economical Solution for 6-Screen Display Video Wall Signage

The NDiS B862 is specifically designed to address the need for high quality contents stretching across multiple displays. The NDiS B862 has six independent HDMI output, two USB 3.0 and two GbE LAN ports and supports WWAN/WLAN through integration module. Powered by AMD Embedded R-Series APU and AMD E6760 GPU, the NDiS B862 can smoothly run multiple Full HD videos. The NDiS B862 is an advanced media player for any applications to demonstrate high-quality high-impact contents across multiple displays.

- AMD embedded R-series APU with AMD Radeon E6760 GPU6x HDMI output with tiled video support
- USB 3.0 and dual GbE LAN support
- Removable fan module
- WWAN/ WLAN/ TV tuner support



NDiS 165

## NDiS B532

### Advanced OPS Signage Player Offers Simple and Easy Deployment

The NDiS B532 is a quiet and powerful digital signage player which is built around fanless design and the superb technology of 3rd generation Intel® Core™ processor family series and QM77 with integrated HD 4000 graphics engine. The digital signage player can offer impressive system performance and full HD video playback on three independent displays; the 1080P signage player can fully satisfy customer's expectation and therefore be used in applications such as advertising, hospitality, brand promotion and digital menu board.

- 3rd generation Intel® Core™ processor with integrated HD 4000 graphic engine
- Fanless design
- 3x HDMI output
- USB 3.0, dual GbE LAN support
- WWAN/ WLAN/ TV tuner support



NDiS B862



## Stand out the Eminent Feature in the Crowd at ISE

**N**EXCOM's digital signage players were the remarkable success of the 2013 Integrated Systems Exhibition (ISE). Exciting new products such as the NDiS B532, NDiS B862 and NDiS M532 enthralled visitors with their sleek fanless design and brilliant performance.

NDiS M532 OPS digital signage player is powered by the 3rd generation Intel® Core™ processor family paired with mobile Intel® QM77 express chipset. The module player has an integrated Intel® HD graphics 4000 and supports Microsoft DirectX 11. Taking advantage of the latest Intel technology, M532 OPS digital signage player can accelerate video analytics, 3D rendering, image processing and video decoding to provide highly personalized information based on the result of audience measurement to deliver accurate marketing message to target audience.

Additionally, NDiS B532 powered by 3rd generation Intel® Core™ processor, which supports dual full HD video playback plus

impressive system performance and with 1080P video playback on three independent displays, fully satisfies the customer's expectation and therefore can be used in applications, such as advertising, hospitality, brand promotion and digital menu boards.

Last but not least, NDiS B862 digital signage player captured visitor's imagination with its ability to support six independent HDMI outputs, dual USB3.0 and dual GbE Ethernet with optional WLAN. NDiS B862 is therefore an advanced media player which is perfect for high-impact deployments across multiple screens.



## Headquarters

### NEXCOM International Co., Ltd.

15F, No. 920, Chung-Cheng Rd., ZhongHe District, New Taipei City, 23586, Taiwan, R.O.C.

Tel: +886-2-8226-7786

Fax: +886-2-8226-7782

www.nexcom.com

## America

### USA

#### NEXCOM USA

2883 Bayview Drive,  
Fremont CA 94538, USA

Tel: +1-510-656-2248

Fax: +1-510-656-2158

Email: sales@nexcom.com

www.nexcom.com

## Asia

### Taiwan

#### Central Taiwan Office

16F, No. 250, Sec. 2, Chongde Rd.,  
Beitun Dist.,  
Taichung City 406, R.O.C.

Tel: +886-4-2249-1179

Fax: +886-4-2249-1172

Email: sales@nexcom.com.tw

www.nexcom.com.tw

### Japan

#### NEXCOM Japan

9F, Tamachi Hara Bldg.,  
4-11-5, Shiba Minato-ku,  
Tokyo, 108-0014, Japan

Tel: +81-3-5419-7830

Fax: +81-3-5419-7832

Email: sales@nexcom-jp.com

www.nexcom-jp.com

## China

### NEXCOM China

2F, Block 4, Venus Plaza, Bldg. 21,  
ZhongGuanCun Software Park, No. 8,  
Dongbeiwang West Rd., Haidian District,  
Beijing, 100193, China

Tel: +86-10-8282-6599

Fax: +86-10-8282-5955

Email: sales@nexcom.cn

www.nexcom.cn

### Shanghai Office

Room 1505, Greenland He Chuang Bldg.,  
No. 450 Caoyang Rd.,  
Shanghai, 200062, China

Tel: +86-21-6150-8008

Fax: +86-21-3251-6358

Email: sales@nexcom.cn

www.nexcom.cn

### Nanjing Office

Hall C, Block 17, Tian Xing Cui Lang Bldg.,  
No. 49 Yunnan North Rd.,  
Nanjing, 210018, China

Tel: +86-25-8315-3486

Fax: +86-25-8315-3489

Email: sales@nexcom.cn

www.nexcom.cn

### Shenzhen Office

Western Room 708, Block 210,  
Tairan Industry & Trading Place, Futian Area,  
Shenzhen, 518040, China

Tel: +86-755-8332 7203

Fax: +86-755-8332 7213

Email: sales@nexcom.cn

www.nexcom.cn

### Wuhan Office

1-C1804/1805, Mingze Liwan, No. 519  
South Luoshi Rd., Hongshan District,  
Wuhan, 430070, China

Tel: +86-27-8722-7400

Fax: +86-27-8722-7400

Email: sales@nexcom.cn

www.nexcom.cn

### Chengdu Office

9F, Shuxiangxie, Xuefu Garden,  
No.12 Section 1, South Yihuan Rd.,  
Chengdu, 610061, China

Tel: +86-28-8523-0186

Fax: +86-28-8523-0186

Email: sales@nexcom.cn

www.nexcom.cn

## Europe

### France

#### NEXCOM France

La Grande Arche-Paroi Nord,  
92044 Paris La Défense, France

Tel: +33 (0) 1 40 90 33 35

Fax: +33 (0) 1 40 90 31 01

Email: sales.fr@nexcom.eu

www.nexcom.eu

### Germany

#### NEXCOM GmbH

Leopoldstraße Business Centre,  
Leopoldstraße 244,  
80807 Munich, Germany

Tel: +49-89-208039-278

Fax: +49-89-208039-279

Email: sales.de@nexcom.eu

www.nexcom.eu

### Italy

#### NEXCOM ITALIA S.r.l

Via Gaudenzio Ferrari 29,  
21047 Saronno (VA), Italia

Tel: +39 02 9628 0333

Fax: +39 02 9286 9215

Email: nexcomitalia@nexcom.eu

www.nexcomitalia.it

### United Kingdom

#### NEXCOM EUROPE

10 Vincent Avenue,  
Crownhill Business Centre,  
Milton Keynes, Buckinghamshire

MK8 0AB, United Kingdom

Tel: +44-1908-267121

Fax: +44-1908-262042

Email: sales.uk@nexcom.eu

www.nexcom.eu



Please verify specifications before quoting. This guide is intended for reference purpose only.

All product specifications and information are subject to change without notice.

No part of this publication may be reproduced in any form or by any means without prior written permission of the publisher.

All brand and product names are registered trademarks of their respective companies.

©NEXCOM International Co., Ltd. 2013